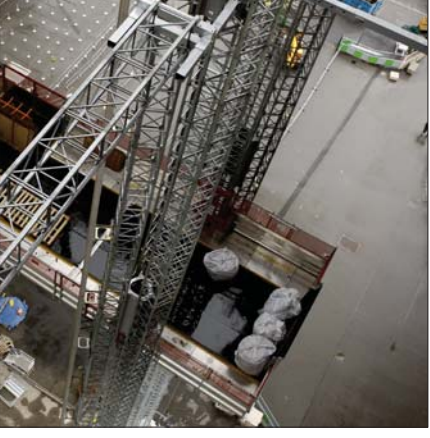
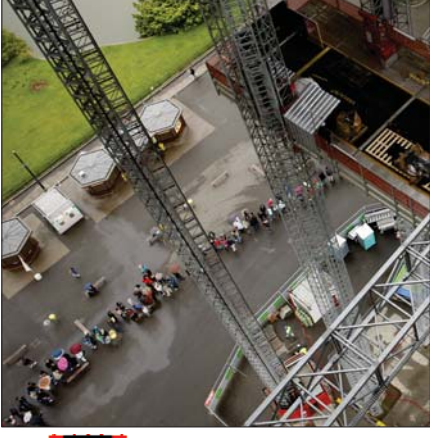
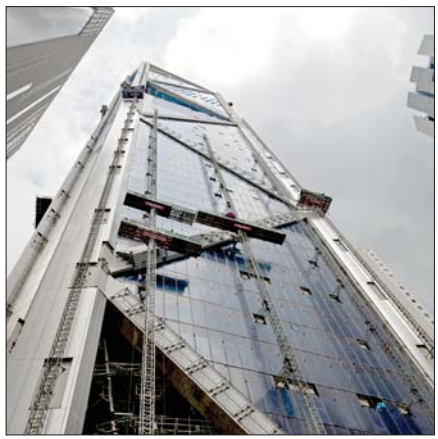
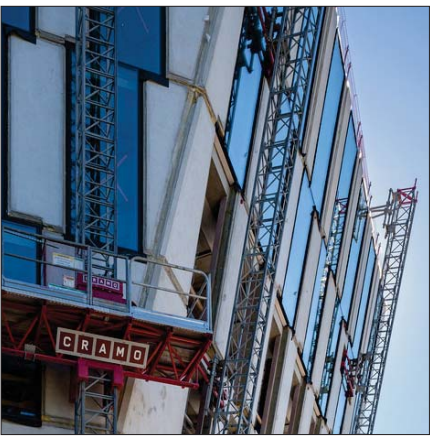


SC

Mast climbing work platforms Product family

Mast climbing work platforms (MCWPs) are increasingly being used as temporary work places, giving variable height access to specific areas above ground level. In many cases MCWPs are more convenient to use than other forms of access equipment such as ladders, fixed scaffolding, staging or swingstage.



Mast climbing work platforms



Properties

MAST CLIMBERS ARE IDEAL for façade work when lifting capacity, work ergonomics, and full surface accessibility are required on a new construction or renovation site. Scanclimber mast climbers offer lifting capacity from 1000 kg up to 10200 kg, ideal work ergonomics with full access to the surface with lifting speeds up to 12 meters per minute.

RACK AND PINION DRIVEN Scanclimber mast climbers are medium to heavy weight lifting machines and working platforms – all in one package. They can handle extreme heights, climbing fast and reliably up to 300 meters. They are well-suited for facade work that requires a capacity from 1 tonne to 10 tonnes, whether for new construction or restoration.

Uses

SCANCLIMBER MAST CLIMBERS combine low ownership costs with versatility, reliability and safety. They are the ideal access solution for a wide variety of trades: glazing, EIFS, painting, roofing,

caulking, restoration, inspection, cleaning, maintenance, stucco and many others. Compact and highly adaptable Scanclimber mast climbers offer platform extensions to achieve a number of configurations that accommodate diverse facades.

Single mast and twin mast versions

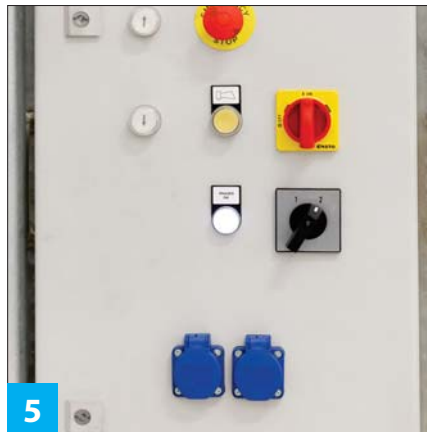
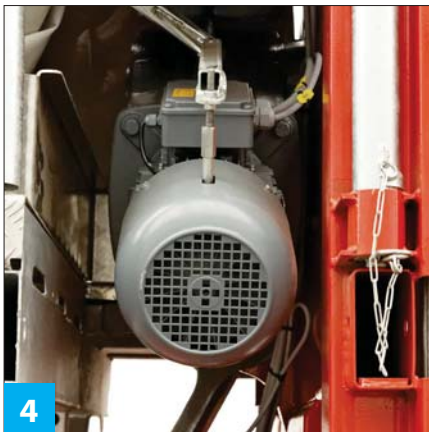
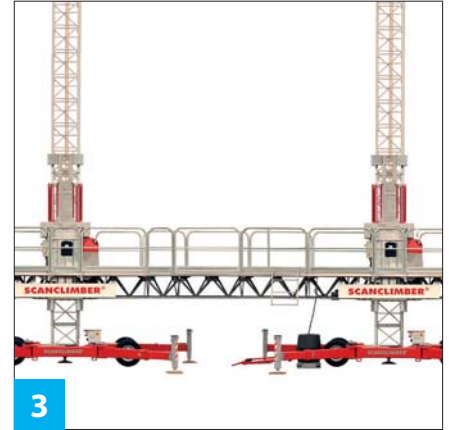
MAST CLIMBERS ARE AVAILABLE in two versions to meet your specific needs and your budget requirements.

THE SINGLE MAST versions support from 1 to 6 tonne payloads with platform lengths between 4.1 m and 20.1 meters.

THE TWIN MAST versions support payloads from 1 to 10.2 tonnes with platform lengths of up to 48.6 meters.

IF NEEDED, you can make the twin mast machine from two separate (similar) machines with minor add-ons. And naturally, a twin machine can always be separated as two single mast versions.

Technical Data	SC4000		SC5000	
	Single mast	Twin mast	Single mast	Twin mast
Maximum platform length / loading capacity	4.2 m / 2000 kg 7.4 m / 1700 kg 10.5 m / 1400 kg 12.5 m / 1200 kg	11.9 m / 4200 kg 15.1 m / 3800 kg 19.9 m / 3250 kg 23.1 m / 2775 kg 26.3 m / 2515 kg 31.4 m / 2065 kg	4.1 m / 2700 kg 7.3 m / 2300 kg 10.5 m / 1900 kg 13.7 m / 1500 kg 16.9 m / 1000 kg	12.6 m / 5000 kg 20.6 m / 4000 kg 28.6 m / 3000 kg 35.0 m / 2200 kg 40.6 m / 1500 kg
Maximum freestanding height	15 m	15 m	18–20 m	18–20 m
• with extended outriggers on both sides	15 m	15 m	13–18 m	12.5–17.5 m
Maximum height with top anchor	25 m	25 m	25 m	25 m
Maximum height with mast anchored	100 m (higher mast by request)	100 m (higher mast by request)	100 m (higher mast by request)	100 m (higher mast by request)
Distance between anchors	18 m	18 m	18 m	18 m
Lifting speed	6 m / min	6 m / min	7 m / min	7 m / min
Mast section, hot-dip galvanised	1.25 m / 82 kg	1.25 m / 82 kg	1.25 m / 82 kg	1.25 m / 82 kg
Electric system	2x400 V/50 Hz/	4x400 V/50 Hz/	2x400 V/50 Hz/	4x400 V/50 Hz/
- lifting motors	2.2 kW, 3 phase/32 A	2.2 kW, 3 phase/32 A	3 kW, 3 phase/32 A	3 kW, 3 phase/32 A
Safety devices				
• overspeed safety brake	◆	◆	◆	◆
• emergency stop and limit switches	◆	◆	◆	◆
• electromagnetic brake	◆	◆	◆	◆
• phase sequency relay	◆	◆	◆	◆
• residual current device	◆	◆	◆	◆



Details, examples

Wheel and minichassis

1 **SCANCLIMBER PLATFORMS** are available with a wheel or mini chassis. A wheel chassis can be moved around a work site with its own electric motor, or it can also be towed using the tow bar. The wheel chassis has swivelling telescopic outriggers that can be adjusted in several positions to support the machine.

Safety brake

2 A **MECHANICAL**, centrifugal safety brake is a standard feature on all Scanclimber work platforms. It improves user safety.

Automatic levelling system

3 A **TWIN VERSION** of Scanclimber mast climbers comes with an automatic levelling system. This highly reliable system controls the platform drive precisely and ensures that the platform is always horizontally levelled.

Emergency lowering system

4 **ALL SCANCLIMBER PLATFORMS** can be manually lowered to the ground.

Outlet for hand tools

5 **HAND TOOLS** or other electrical devices can be plugged in the outlet sockets on the platform. It is a handy way to use electrical tools on the platform without impractical extension cables.

Hot-dip galvanisation

6 **ALL THE MAIN PARTS** of Scanclimber work platforms are hot-dip galvanised. So the surfaces are easy to keep clean while protected against demanding weather conditions and corrosion. Galvanisation ensures a long life-time for the machine in any weather conditions.

Scanclimber is the world's technology leader in mast climbing equipment for installations. The company has its corporate head office in Pirkkala, Finland, and manufacturing in Gniezno, Poland. The company employs more than 200 people worldwide. Scanclimber creates value for its customers with high quality, reliable and flexible vertical access solutions.

SCANCLIMBER®
by Tractel®

Scanclimber Oy, Turkkirata 26, FI-33960 Pirkkala | www.scanclimber.com
Tel. +358 10 680 7000, Fax +358 10 680 7033

Authorised partner
DEJONG HOISTS (Australia)
Phone + 61 8 9241 6000
Fax + 61 8 9248 3244
Email info@dejonghoists.com.au
www.dejonghoists.com.au

